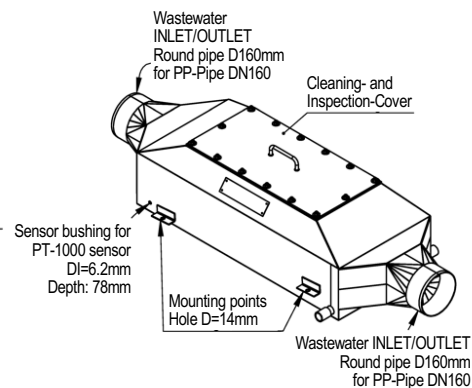
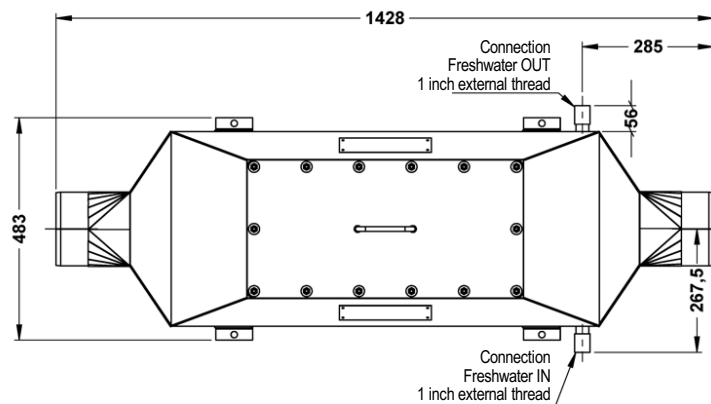
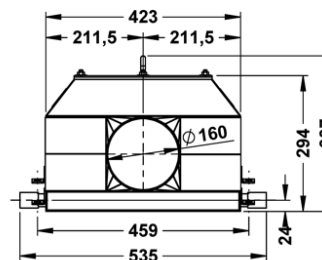
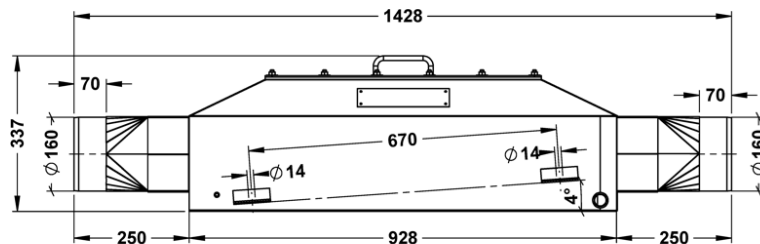


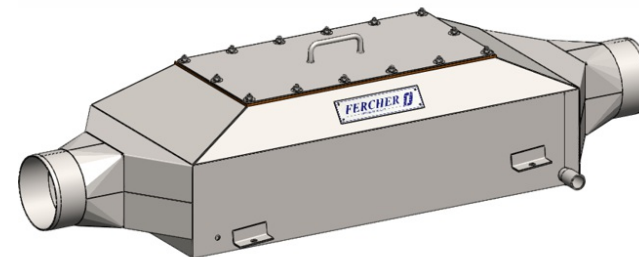
## FERCHER Wastewater-Heatexchanger Type **AWT-924-K** - Datasheet



General	
Model-name / Type:	<b>AWT-924-K</b>
Material:	<b>AISI 316L</b>
External Dimensions	
Length:	<b>1 428 mm</b>
Width:	<b>535 mm</b>
Height:	<b>337 mm</b>
Weights	
Empty weight:	<b>32 kg</b>

Wastewater	
Maximum-Flowrate:	<b>1,0 L/s</b>
Max. allowed temperature:	<b>100 °C</b>
Wastewater-Inlet:	<b>pipe D=160</b>
Wastewater-Outlet:	<b>pipe D=160</b>
Freshwater	
Maximum-Flowrate:	<b>1,0 L/s</b>
Max. allowed pressure:	<b>6 bar</b>
Water-Inlet:	<b>1 inch external thread</b>
Water-Outlet:	<b>1 inch external thread</b>

**Cleaning:** Wastewater-side of heatexchanger can be cleaned during full operation, just take off panels and clean (for instance with pressure-cleaner and/or brush)



## FERCHER Wastewater-Heatexchanger Type **AWT-924-K** - Characteristic curves

Curves are valid for operation with freshwater-IN-temperature of 15°C

For special/individual calculations please contact us at [office@fercher.at](mailto:office@fercher.at). We gladly help you with choosing the correct heatexchanger and with calculations.

