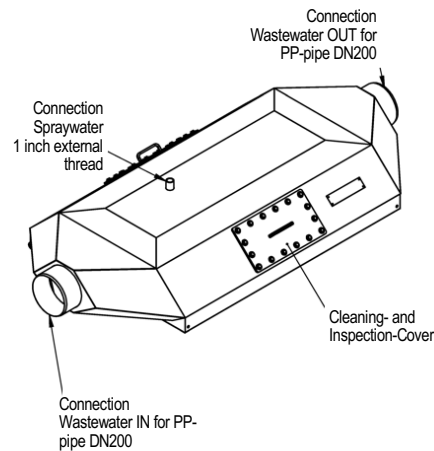
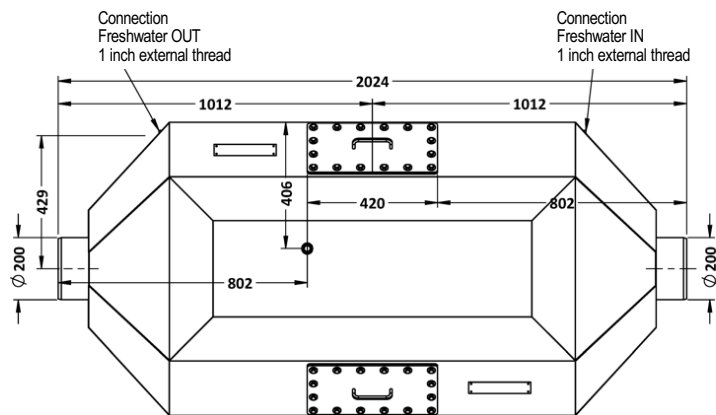
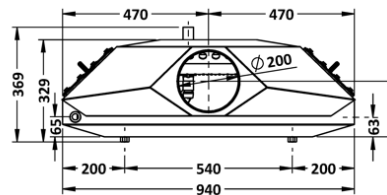
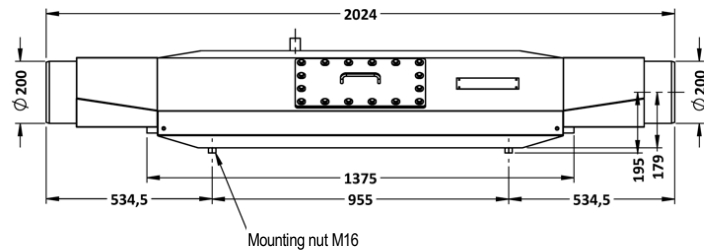
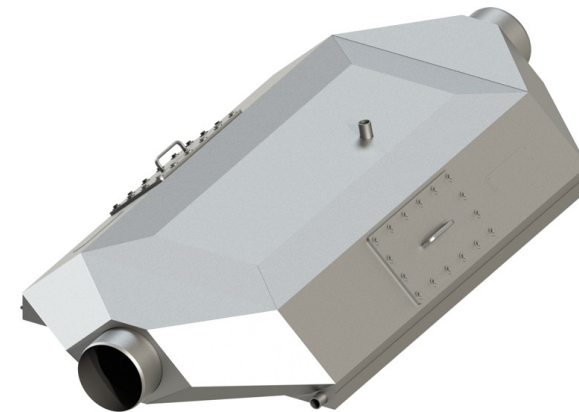


FERCHER Wastewater-Heatexchanger Type **AWT-928** - Datasheet



General		Wastewater	
Model-name / Type:	AWT-928	Maximum-Flowrate:	2,0 L/s
Material:	AISI 316L	Max. allowed temperature:	100 °C
External Dimensions		Wastewater-Inlet:	pipe D=200
Length:	2 024 mm	Wastewater-Outlet:	pipe D=200
Width:	940 mm	Freshwater	
Height:	372 mm	Maximum-Flowrate:	1,4 L/s
Weights		Max. allowed pressure:	6 bar
Empty weight:	99 kg	Water-Inlet:	1 inch external thread
		Water-Outlet:	1 inch external thread

Cleaning: Wastewater-side of heatexchanger can be cleaned during full operation, just take off panels and clean (for instance with pressure-cleaner and/or brush)



FERCHER Wastewater-Heatexchanger Type **AWT-928** - Characteristic curves

Curves are valid for operation with freshwater-IN-temperature of 15°C

For special/individual calculations please contact us at office@fercher.at. We gladly help you with choosing the correct heatexchanger and with calculations.

