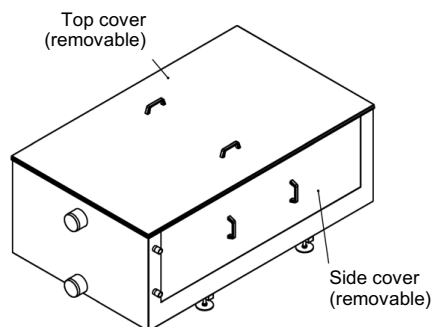
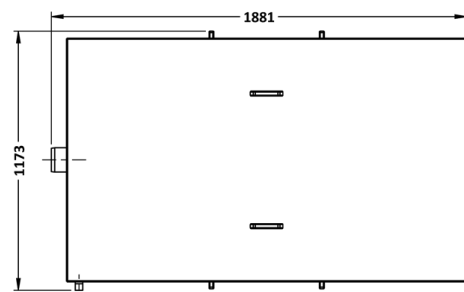
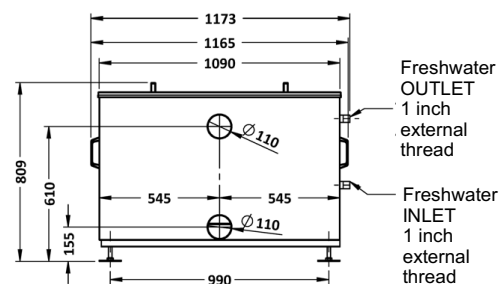
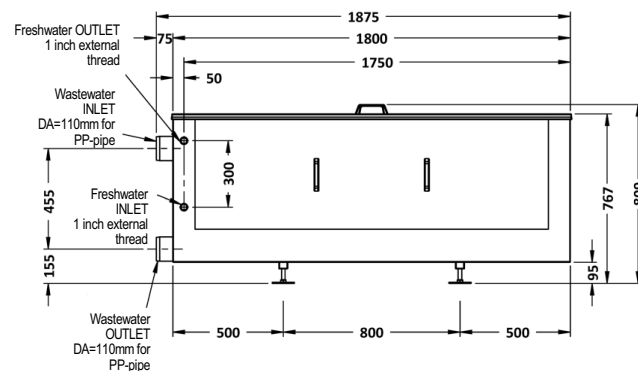


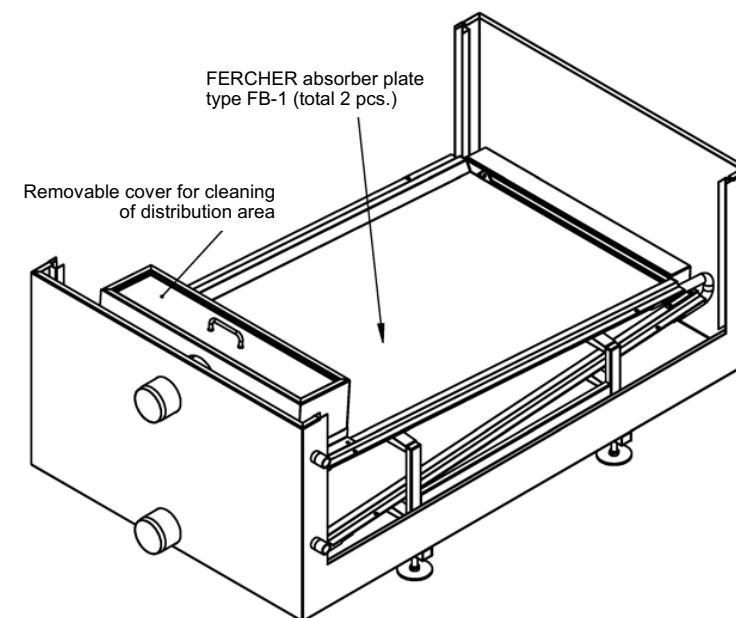
FERCHER Wastewater-Heatexchanger Type **FB-2/S-1-1** - Datasheet



General	
Model-name / Type:	FB-2/S-1-1
Material:	AISI 316L
External Dimensions	
Length:	1 875 mm
Width:	1 173 mm
Height:	809 mm
Weights	
Empty weight:	206 kg

Wastewater	
Maximum-Flowrate:	4,0 L/s
Max. allowed temperature:	100 °C
Wastewater-Inlet:	pipe D=110
Wastewater-Outlet:	pipe D=110
Freshwater	
Maximum-Flowrate:	2,8 L/s
Max. allowed pressure:	6 bar
Water-Inlet:	1 inch external thread
Water-Outlet:	1 inch external thread

Cleaning: Wastewater-side of heatexchanger can be cleaned during full operation, just take off panels and clean (for instance with pressure-cleaner and/or brush)



FERCHER Wastewater-Heatexchanger Type **FB-2/S-1-1** - Characteristic curves

Curves are valid for operation with freshwater-IN-temperature of 15°C

For special/individual calculations please contact us at office@fercher.at. We gladly help you with choosing the correct heatexchanger and with calculations.

