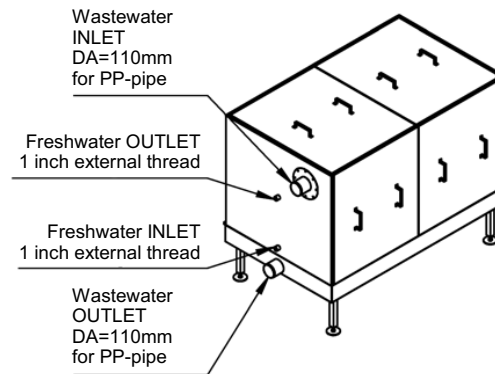
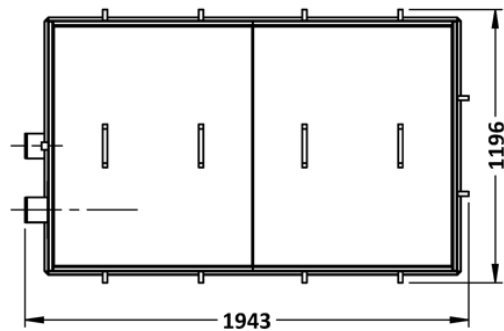
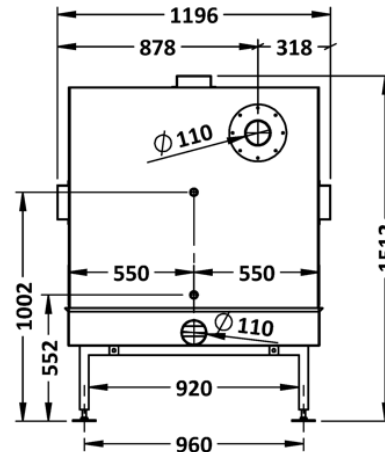
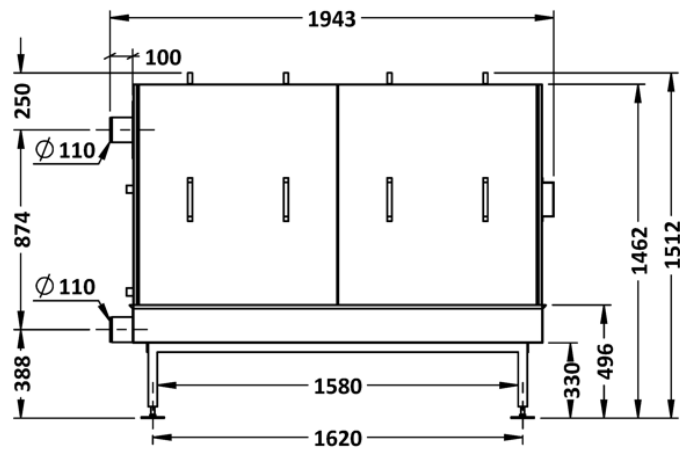
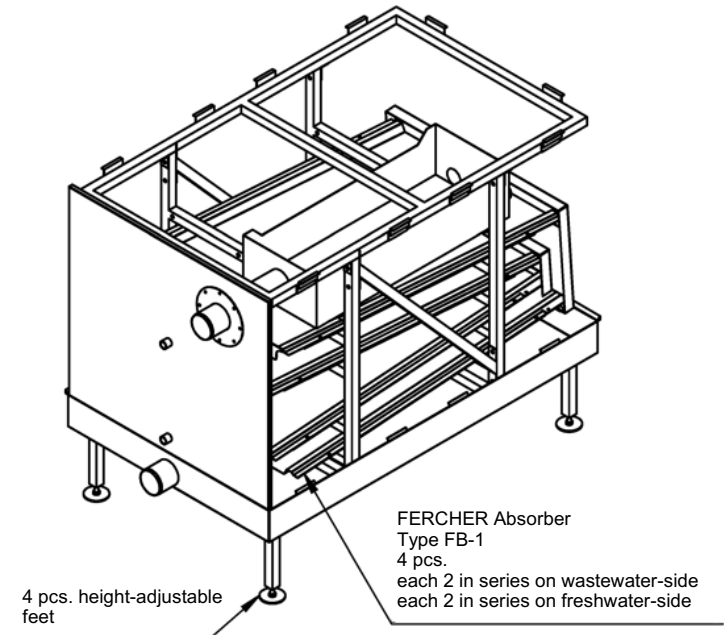


## FERCHER Wastewater-Heatexchanger Type **FB-4/S-2-2** - Datasheet



General		Wastewater	
Model-name / Type:	FB-4/S-2-2	Maximum-Flowrate:	4,0 L/s
Material:	AISI 316L	Max. allowed temperature:	100 °C
External Dimensions		Wastewater-Inlet:	pipe D=110
Length:	1 943 mm	Wastewater-Outlet:	pipe D=110
Width:	1 196 mm	Freshwater	
Height:	1 512 mm	Maximum-Flowrate:	2,0 L/s
Weights		Max. allowed pressure:	6 bar
Empty weight:	429 kg	Water-Inlet:	1 inch external thread
		Water-Outlet:	1 inch external thread

**Cleaning:** Wastewater-side of heatexchanger can be cleaned during full operation, just take off panels and clean (for instance with pressure-cleaner and/or brush)



## FERCHER Wastewater-Heatexchanger Type **FB-4/S-2-2** - Characteristic curves

Curves are valid for operation with freshwater-IN-temperature of 15°C

For special/individual calculations please contact us at [office@fercher.at](mailto:office@fercher.at). We gladly help you with choosing the correct heatexchanger and with calculations.

